

# TAYLOR COUNTY FAIR OPEN BEEF SHOW

*Saturday \* June 2, 2018 \* 6:00 p.m. EDT*  
Taylor County Fairgrounds \* 1835 New Lebanon Road \* Campbellsville

**Check-in required 1 hour prior to show time**

**Gate Admission for Exhibitors \$5.00 (Excludes Midway Rides)**

**General Admission \$10.00 (Includes Midway Rides)**

**Angus \* Hereford \* Charolais \* Limousin  
\* Gelbvieh \* Shorthorn \* Simmental and A.O.B.**

## OPEN COW CALF CLASS (All Breeds)

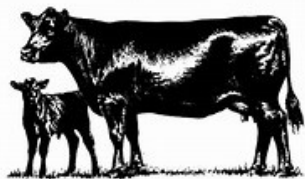
### PREMIUMS

**CHAMPION \$100.00 2nd Place \$50.00**  
**3rd Place \$30.00 4th Place \$20.00**  
**5th Place \$10.00**

## BULL & HEIFER CLASSES OFFERED

### PREMIUMS

**GRAND CHAMPION \$50.00**  
**RESERVE CHAMPION \$25.00 \* 1st Place \$25.00**  
**2nd Place \$18.00 3rd Place \$10.00**  
**(For Bulls and Heifers of Each Breed)**



## OPEN YOUTH SHOWMANSHIP (Novice: Gifts & Ribbons)

**1st Place Senior Showmanship \$100.00 Cash**

**1st Place Junior Showmanship \$100.00 Cash**

*All Jr & Sr Showmanship Participants will receive \$10.00 Cash*

**\$250 to the Supreme Champion Heifer \$250 to the Supreme Champion Bull**  
***Taylor County Heifer Chain Class***

### CLASSES -HEIFERS

1. **Junior Calf** (calved after 01/01/18)
2. **Late Senior Calf** (calved from 11/01 to 12/31/17)
3. **Early Senior Calf** (calved from 09/01 to 10/31/16)
4. **Late Summer Yearling** (calved from 07/01 to 08/31/16)
5. **Early Summer Yearling** (calved from 05/01 to 06/30/16)
6. **Late Junior Yearling** (calved from 03/01 to 04/30/16)
7. **Early Junior Yearling** (calved from 01/01 to 02/28/16)
8. **Senior Yearling** (calved from 09/01 to 12/31/15)
9. **CHAMPION FEMALE**
10. **RESERVE CHAMPION FEMALE** (Second place animal in class from which champion was selected is eligible to show for Reserve Champion)
11. **SUPREME CHAMPION FEMALE** (All Breed Champion Heifers Will Show for Supreme Champion Female)

### CLASSES -BULLS

12. **Junior Calf** (calved after 01/01/18)
13. **Senior Calf** (calved from 09/01 to 12/31/16)
14. **Summer Yearling** (calved from 05/01 to 08/31/16)
15. **Junior Yearling** (calved from 01/01 to 04/30/16)
16. **Senior Yearling** (calved from 09/01 to 12/3/15)
17. **Two Year Olds**
18. **CHAMPION BULL**
19. **RESERVE CHAMPION BULL** (Second place animal in class from which champion was selected is eligible to show for Reserve Champion)
20. **SUPREME CHAMPION BULL** (All Breed Champion Bulls Will Show for Supreme Champion Bull)



**Show Sponsors: Taylor County Cattlemen's Association,  
Tractor Supply, Limestone and Taylor County Farm Bureau**

**For More Information, Call Chairperson William Wallace Evans at 270.789.7726  
or the Taylor County Extension Office 270.465.4511**